



NIAGARA FALLS
CONVENTION CENTRE

Theatre Rider

WHERE INSPIRATION FLOWS.



Niagara Falls Convention Centre
6815 Stanley Avenue
Niagara Falls, Canada, L2G 3Y9
905.357.6222 | fallsconventions.com

Rental rates and equipment rental charges noted herein are subject to change without notice and supersede any version of this guide printed prior to January 1, 2025. This guide and its contents are incorporated by direct reference in your license agreement.

For booking inquiries, please contact:

- t 905.357.7010
- e sales@fallsconventions.com



Table of Contents

3	Table of Contents	9	Orchestra Pit Performance Grade Flooring Piano Pre- Function Space Security
4	Fallsview Theatre Theatrical Production Services	10	SOCAN & Re:Sound Stage and Curtains
5	Included Theatrical Production Services	11	Ticketing Ticket Fee Ticketing Rates & Conditions
6	Audio/Visual Audio Inventory Additional Audio Visual Rigging/Stage Hand Labour Additional Lighting Exclusive Services	12	Food & Beverage Concessions & Bars
7	Technical & Operational Specifications	13	Green Room Menu Day One Day Two
8	Announcement Assistive Listening Devices Box Office/Information Desk Coat Check Control (Sound) Booth Dressing Rooms Electrical Ushers Merchandise	14	Appendix 15 Appendix A - Fallsview Theatre Stage Plot 16 Appendix B - Dressing Room Floorplan 17,18 Appendix C - Room Specs and Photos 19 Appendix D - Fallsview Theatre Seating Chart



Fallsview Theatre

Steps away from the natural wonder, Niagara Falls serves as the perfect backdrop to the Fallsview Theatre. With a telescopic seating system that accommodates various types of concerts and performances, we offer excellent sight lines from every one of our 986 seats. The fully equipped Theatre is also available for corporate or social uses, providing an original and intimate setting for banquets, receptions, exhibitions, seminars and presentations.

Theatrical Production Services

For over four decades, Stagevision has been bringing event visions to life through seamless technical execution and expert production services. Our seasoned team transforms creative concepts into flawless reality, handling every technical detail with precision and transparency.

We understand that each event is unique, which is why we approach every production with innovative solutions and meticulous attention. Working alongside event planners, venue partners, and creative teams, we orchestrate the technical elements that make your vision shine - from state-of-the-art audio and lighting to dynamic staging solutions. Our collaborative approach means you get both technical excellence and practical solutions that work for your event. Let us focus on bringing your event vision to life while you concentrate on engaging with your audience.

STAGEVISION

Stagevision - Sales/ Production

Jon Luce, *General Manager*

t (905) 328-7260

e jluce@stagevision.com



Included Theatrical Production Services

Audio

JBL VerTec line array audio system:

Left Stack:

- 2 – JBL VerTec VT4883
- 5 – JBL VerTec VT4886

Right Stack:

- 2 – JBL VerTec VT4883
- 5 – JBL VerTec VT4886

Additional Audio:

- 2 – EV Xi-1122A-85F monitors (flown on stage sides)
- 6 – XLR patch lines from stage to control booth
- 2 – XLR return lines from stage right to control booth
- Left and right main audio patch points are located in the control booth, stage right and stage left
- Program sound to the dressing rooms

Visual

- Motorized Projection Screen
- 159" x 284" Format Ratio 16:9
- 213" x 284" Format Ratio 4:3
- Epson EB-PU2213B 13,000 lumen full HD laser projector located in control booth
- Sony Blu-ray player
- Stage camera feed from control booth to the dressing rooms

Audio Inventory

- 1 – Soundcraft Vi2000 digital audio mixing console
- 1 – Soundcraft Vi Stagebox (portable to stage left or stage right)
- 2 – Yorkville NX25P 12" powered speakers
- 4 – Shure SM58 microphones
- 3 – Shure SM57 microphones
- 1 – Apex130 boundary microphone
- 1 – Shure BETA 52A microphone
- 1 – Shure clip-on lapel microphone
- 3 – Radial Engineering JDI passive direct boxes

See Appendix A

Rigging/Stage Hand Labour Lighting

Stage wash comprised of 24 fixtures including:

FOH:

- 12 – Ovation Rêve E-3 19 degree RGBRAM ellipsoidals
- 6 – Chauvet Ovation F-415FC RGBAL zoomable fresnels
- 2 – Elation Fuze Wash 500 RGBMA moving head wash

Mid Stage:

- 6 – Chauvet Ovation F-415FC RGBAL zoomable fresnels
- 2 – Elation Fuze Wash 500 RGBMA moving head wash

Control:

- Chamsys QuickQ 20 lighting desk

Basic stage wash consists of:

- Open white or coloured wash with up to 2 simultaneous FOH specials via moving heads

Please note that a lighting re focus can be provided for an additional fee



Included Theatrical Production Services cont'd

Additional Lighting (\$)

See our preferred supplier for pricing and quotes.

- Moving lights
- LEDs
- Follow spots
- Truss and rigging
- Lighting design

Exclusive Services

- Overhead work beyond 3M (10ft) including ground supported structures
- Rigging labour
- Production rigging equipment
- Theatre lighting equipment
- Lighting services set/strike and operator labour
- Scenic element rigging
- Stage hand labour
- Refocus of theatre lighting rig

Rigging in the Theatre is from structural I-beams. The weight load is 2,000lbs per 10ft. Drawings and DWG files are available upon request.

Request pricing and quotes for these and other requirements through [Stagevision](#).



Technical & Operational Specifications

Announcement

Before all shows within the Fallsview Theatre a pre-recorded announcement is played to address standard theatre etiquette and safety (i.e., no outside food or beverage, cell phones, flash photography and emergency exits). This is a mandatory announcement, so please ensure it is included in your event/show run sheet when planning your timeline.

Assistive Listening Devices

Niagara Falls Convention Centre is equipped with assistive listening devices for audience members. Receivers and headsets are available at the Box Office upon request.

Requires 24 hour notice. Individuals requiring these devices must provide identification (such as a driver's license) to our Box Office, which will be photocopied and shredded when the device is returned.

Box Office/Information Desk

Our goal is to offer your guests an unforgettable experience not only when visiting our facility, but also while visiting our world-famous destination. Our Box Office/Information Desk can provide directions or offer any other type of concierge service that your guests may require. They will highlight what performances are happening in our Theatre and are available on the day of your event to assist. On the day of your scheduled event, the Box Office will be open 90 minutes before the start of the event and remain open for 30 minutes after the start of the event. Tickets.com is the exclusive ticket producer and distributor for ticketed events in the Fallsview Theatre. If you have any unique requests or additions you wish to make available to your guests, please ask your Event Manager for assistance.

Accessible Seating

Accessible and companion seating is available in Row B, seats 27-38. **Requires 24 hour notice.** Please contact Box Office for availability.

See Appendix D

Coat Check

Coat check service is available upon request at a rate of \$27.00 an hour or \$2.00 per coat, whichever is the greater of the two.

Additional garment racks are available for rent individually at a rate of \$25.00 each, subject to availability. Please see your Event Manager for additional details.

Control (Sound) Booth

The control (sound) booth is located on the Centre's second level and is accessible through the inside of the Theatre and a second level corridor next to the back of the Theatre. House lighting levels and audio visual controls are operated from the control (sound) booth via a Crestron controller. Spotlight(s) can be positioned inside the control (sound) booth for easier operation.

Dressing Rooms

Dressing rooms are located on the lower level of Niagara Falls Convention Centre with two main access points. All dressing rooms are equipped with program sound.

See Appendix B and C

Electrical

All electrical services are Cam-Lok tie in. Other services and connections are available upon request. Niagara Falls Convention Centre is the exclusive provider for all electrical requirements. Please contact your Event Manager to review your electrical needs and prepare a quote.

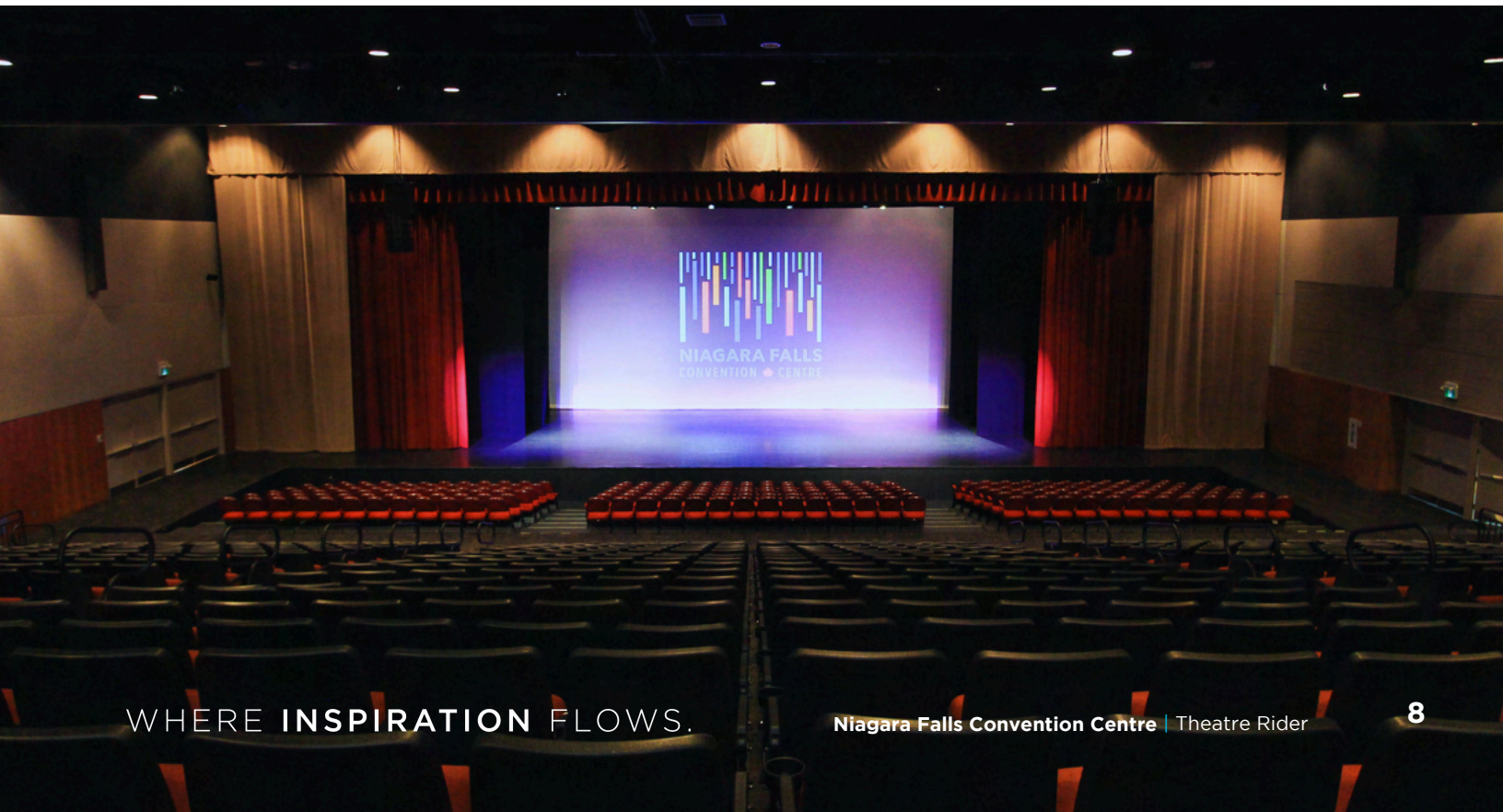


Ushers

Prior to shows and performances, our team of friendly ushers will check tickets, show people to their seats, and hand out programs. They will assist late arrivals and people with accessibility needs to find their seats. During the performance they may deal with problems or concerns, referring customers to a Floor Supervisor/the Guest Services Team. They will also help with the flow of traffic during intermissions and ensure everyone gets safely back to their seats. In the event of an emergency, our ushers will assist with evacuations, ensuring the Theatre is cleared in a safe and timely manner. Ushers are required for all shows and performances in the Theatre and are a chargeable expense. Rates and the number of ushers required for your event can be found in your contract.

Merchandise

The sale of programs, merchandise and novelties at Niagara Falls Convention Centre is subject to control and supervision. Rules and commissions are outlined in your rental contract. Understanding that guests see all sales as part of the overall facility experience, merchandise stands must reflect the standard of the facility and sellers must conduct themselves in a friendly, polite and professional manner. It is also important to remember that there may be different renters or multiple events selling merchandise at the same time. When this occurs, your Event Manager will work with you to create product placement that makes sense for your event.





Orchestra Pit

Our multi-functional rectangular orchestra pit holds 226 red cushioned seats with cup holders. Seats are portable and can be removed or added to suit the needs of the performance. Theatre seats in this section can also be fully removed to house an orchestra, or raised to create a flat floor and to extend the performance surface. The walls are concrete and black in colour with a black railing on both ends. Please see your Event Manager for applicable service fees associated with orchestra pit alterations.

Performance Grade Flooring

The Fallsview Theatre has a performance grade dance floor fitted to the performance space and available to rent upon request. The dance floor's surface provides the right amount of slip resistance, making it a versatile surface that can support a broad range of dance forms, including tap, flamenco, Irish, ballet, modern, and jazz, as well as non-percussive shoe styles like jazz, modern, and ballet.

Piano

MODEL: Yamaha G3 Grand Piano

DIMENSIONS: Length 6ft (183cm),
Width 58.5in (148.5cm)

COLOUR/FINISH: High Gloss Black

KEYS: 88 **PEDALS:** 3

NOTE: Please see your Event Manager for availability, rental and tuning costs.

Pre-function Space

Included in your rental is the use of our Theatre pre-function space which includes one registration table, skirted with a wastebasket.

Security

It is our responsibility to provide a secure building and a 24-hour control room where our emergency response system is monitored. You are responsible for providing security appropriate for your event. Staffing levels will be reviewed with you to ensure, based on our experience, you are provided with adequate coverage. If you have questions, please speak with your Event Manager.



SOCAN & Re:Sound

All events with music, live or recorded, with or without lyrics, are subject to a mandatory SOCAN charge.

SOCAN is the Canadian copyright collective that administers the performing rights of more than 100,000 composer, author and music publisher members by licensing the use of their music in Canada. They collect licencing fees on their behalf and distribute royalties to them. This is a mandatory fee whenever music is involved.

Re:Sound is the Canadian not-for-profit music licensing company dedicated to obtaining fair compensation for artists and record companies for their performance rights. On behalf of its members, Re:Sound licenses recorded music for public performances, broadcast and new media.

Below is a list of fees you can expect to encounter. Please talk to your Event Manager for rates pertaining to your event.

SOCAN

Without Dancing	With Dancing
\$93.78 per event	\$187.55 per event

RE:SOUND

Without Dancing	With Dancing
\$39.33 per event	\$78.66 per event

**Please note that all numbers are based on capacity of the room and not the attendance of the group/event.*

Stage and Curtains

STAGE SURFACE

The Fallsview Theatre features a black vinyl floor covering with a concrete subfloor. The remainder of the Theatre is carpeted with the exception of the orchestra pit.

STAGE CURTAINS

- Main red curtain colour: wine, motorized open/close
- Stop feature
- Back traveller curtain colour: black, motorized open/close stop feature
- White CYC
- 4 black moveable wings with pivot feature

STAGE DIMENSIONS & MEASUREMENTS

- White CYC to front of stage - 29ft 7in
- Red curtain to front of stage - 7ft 5in
- Behind white CYC - 5ft
- Wing fully extended onstage (performance space) - 47ft 8in
- Red curtain fully opened (performance space) - 55ft
- Black traveler curtain fully closed to front of stage - 24ft
- Height of proscenium opening - 23ft
- Height of rigging steel onstage - 32ft 3in
- Height of rigging steel over house - 28ft 5in
- Theatre loading door - 7ft 6in x 7ft 6in double door

Loading in and out of the Fallsview Theatre follows an approximately 700ft path through a flat-floored service corridor. Please inquire with your Event Manager for load-in load-out policies. Podiums, lecterns, risers and furniture are available. Please see your Event Manager for rental rates.

The Fallsview Theatre features a state-of-the-art telescopic seating unit which houses red cushioned seats with cup holders. This retractable seating unit has a built-in semi-retractable centre row.

See Appendix A



Ticketing

Tickets.com is the exclusive ticket producer and distributor for events in the Fallsview Theatre. Tickets for your event can be sold through our Box Office once a [Ticketed Event Set Up Form](#) has been completed and submitted to your Event Manager. Additionally, please read through and note the following terms.

Ticket Fee

A fee of \$4.00, inclusive of all taxes, is applied to every ticket sold. This fee is paid by the consumer and collected by either Tickets.com or Niagara Falls Convention Centre, or by both organizations. Any funds collected from this fee will not be remitted by Tickets.com or Niagara Falls Convention Centre.

A delivery fee of \$3.00 will apply for every transaction requiring regular postage within Canada and the US. Due to the uncertainty in arrival times, delivery via postage cannot occur two (2) weeks prior to the scheduled event date.

See [Ticketed Event Set Up Form](#) for more details on ticket fees.

Ticketing Rates & Conditions

Rates are subject to change without notice.

- You (“the Licensee”) agree that Niagara Falls Convention Centre (“the Licensor”) or its agent shall supply all admission tickets on your behalf.
- The Licensee designates the Licensor as the exclusive agent for the sale of tickets for the Licensee’s event.
- All credit card sales will be subject to a 4% surcharge, which covers the appropriate deductions. A final amount will be deducted from the net amount of all ticket sales for the Licensee’s event.
- The Licensee agrees to a ticketing setup fee for their event from \$150.00 upwards and a ticket issuing fee of \$0.35 per ticket.
- The Licensee agrees that \$2.00 of every ticket sold will be collected by Niagara Falls Convention Centre for Theatre improvement.
- On the day of the Licensee’s event, the Box Office will be open 90 minutes before the start of the event, and remain open for 30 minutes after the start of the event.
- The Licensee agrees and understands that tickets to the event will be sold through a computerized ticketing system which may be subject to intermittent interruptions due to technical malfunctions. The Licensor shall make all reasonable efforts to service and maintain the system and take all reasonable steps to restore the system to operation in the event of an interruption. No liability shall accrue to the Licensor.



Food & Beverage

During the planning process, your Event Manager is your single source for planning food & beverage services. By telling your Event Manager how and when you will use the Fallsview Theatre, you can start to make your food & beverage plans, including:

- Catered meals
- Coffee and refreshment service
- Concessions and cafeterias
- Green Room menus
- On stage snacks & refreshments
- Healthy & creative meal alternatives

As outlined in your contract, food and beverage must be provided by our in-house food and beverage team. We do not permit outside food or beverage. If you require meals for your judges and staff, this can be arranged through your Event Manager. Additionally, concessions can be made available that are specific to your event. Please note this service is subject to standard service minimums.

Concessions & Bars

Concessions can be made available for guests upon request. Please note this service is subject to standard service minimums. Niagara Falls Convention Centre has both a full-service Café and Concession Stand. The Fallsview Theatre is also fully licenced for the service of alcohol. Please see your Event Manager for details.



Green Room Menu

Day One

Breakfast \$27/pp

Pastries
Individual Yogurt
Individual Breakfast Wraps to include
vegan option
Whole Fruit
Hot and Cold Beverages

Lunch \$33/pp

Daily Chef Salad
Wonton Chips with Sweet Chili
Stir Fried Vegetables with Tofu and Ginger
Steamed Jasmine Rice
Hoisin Glazed Chicken with Green Beans
Freshly Baked Cookies
Hot and Cold Beverages

Dinner \$33/pp

Minestrone Soup
Arugula & Cherry Tomato Salad with Shaved
Udder Way Cheese
Garlic Bread w/ Cheese
Marinated Grilled Vegetable Display
Penne a la Vodka
Braised Free Range Chicken with Olives and
White Wine
Chocolate Mousse Cake
Hot and Cold Beverages

Day Two

Breakfast \$27/pp

Freshly Baked Pastries
Individual Yogurt
Breakfast Potatoes
Crisp Bacon
Scrambled Eggs
Whole Fruit
Hot and Cold Beverages

Lunch \$33/pp

Kettle Chips with caramelized onion dip
Cole Slaw
Pickles and Crudites
Assorted Wraps and Sandwiches
Tarts and Squares
Hot and Cold Beverages

Dinner \$33/pp

Bean Salad
BBQ Potato Salad
Pasta Salad
Maple Roasted Vegetables
Southern Fried Chicken
Corn Bread
Fresh Melon
Hot and Cold Beverages



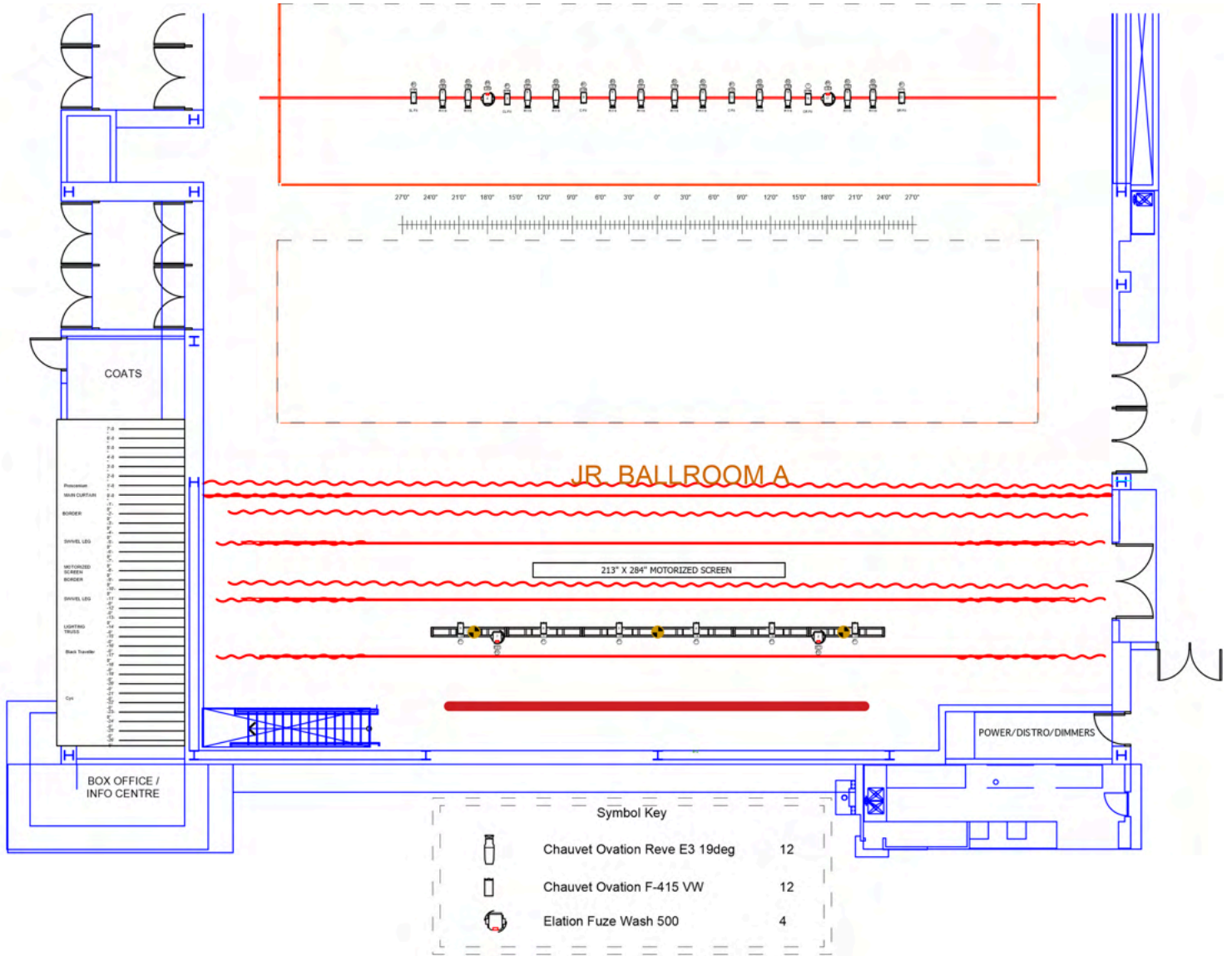


WHERE INSPIRATION FLOWS.

Appendix

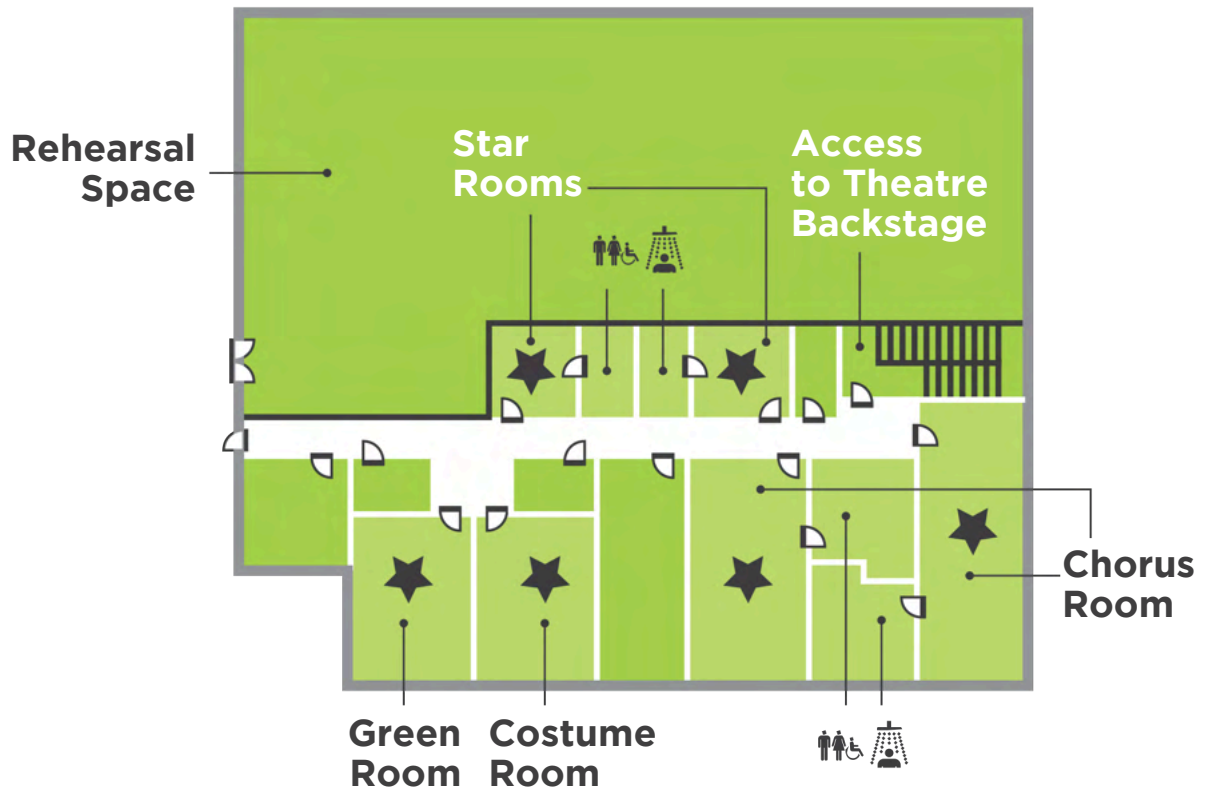


Appendix A - Fallsview Theatre Stage Plot





Appendix B – Dressing Room Floorplan





Appendix C – Room Specs and Photos



Chorus Room One 12ft 9in x 34ft

- Includes chairs
- Makeup counter with mirrors
- Built-in coat rack
- Washroom with shower



Chorus Room Two 14ft 11in x 26ft 8in

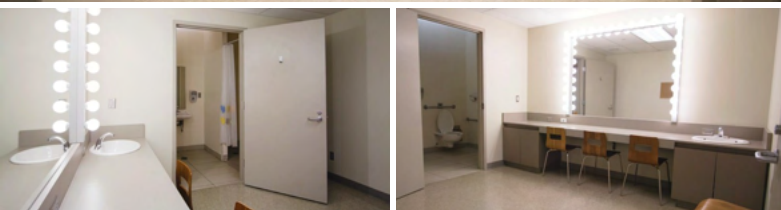
- Includes chairs
- Makeup counter with mirrors
- Built-in coat rack
- Washroom with shower



Star Dressing Rooms

10ft 6in x 10ft 6in and 10ft 6in x 11ft 8in

- Includes one armchair with stool
- Makeup counter with mirror
- Built-in coat rack
- Private washroom with shower





Theatre Show Office 15ft 9in x 20ft 9in

- Includes tables & chairs



Green Room 15ft x 20ft 3in

- Equipped with program video monitor of stage
- Catering fridge & cupboards
- Sofa and love seat
- Catering options (please see Green Room menu)



Sub-Level Future Space 58ft x 95ft

- Bonus space
- Equipped with church pews
- Can function as a multipurpose space



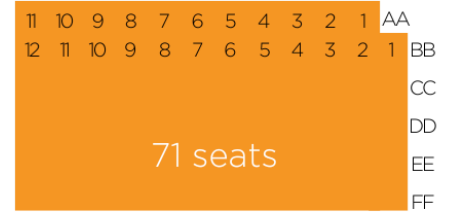
Appendix D - Fallsview Theatre Seating Chart



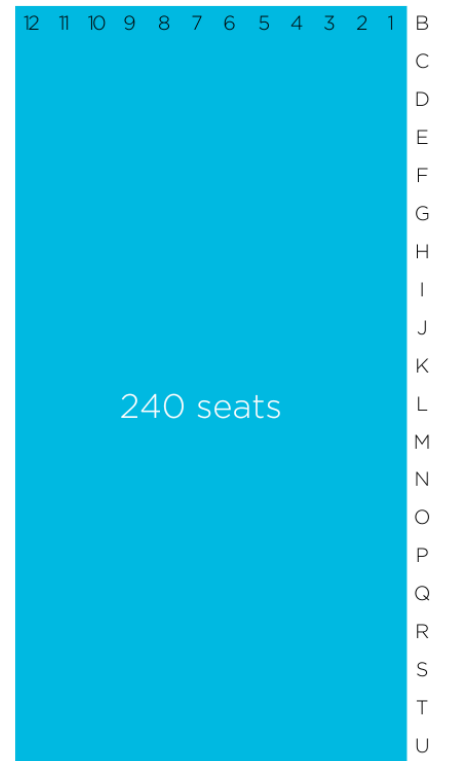
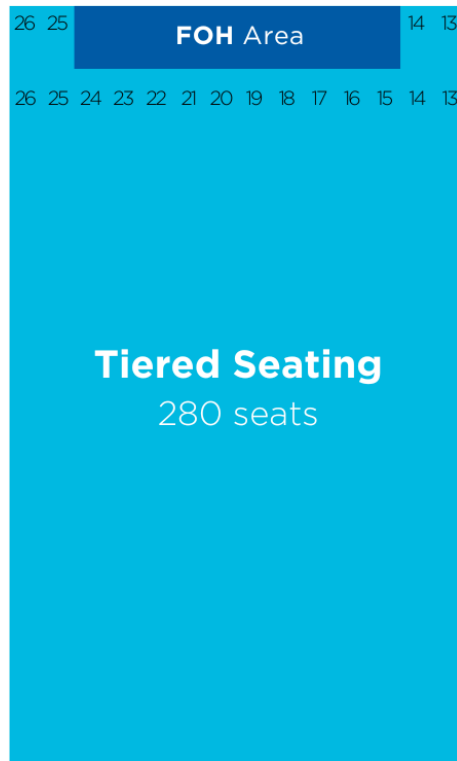
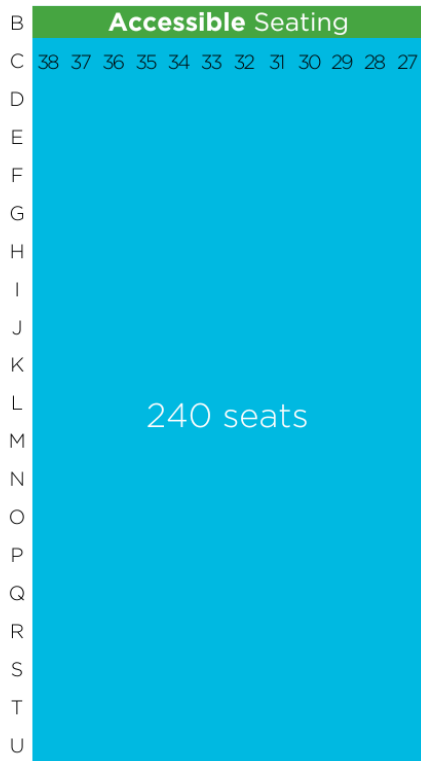
Audience Left



Audience Centre



Audience Right



 FOH Area - 24 Seats
Optional

 Accessible Seating - 12 Seats
*Contact Box Office for Availability

Maximum of 986 Seats Overall